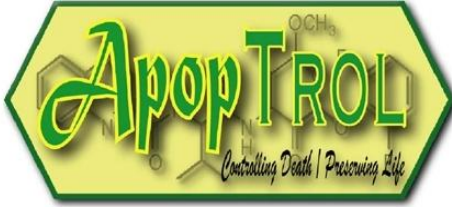


Apoptrol LLC, 2661 Commons Blvd. Beaver Creek, Ohio 45431 USA

<http://www.apoptrol.com>

Phone: 937-427-4015 Email: [customerservice@apoptrol.com](mailto:customerservice@apoptrol.com)



## Beclin-1 Caspase-Cleavage Product (CCP) antibody

**Description:** Affinity-purified, site-directed, caspase-cleavage product (D149) antibody against Beclin-1

**Catalog #** Ab-00011

**Amount:** 100ul antibody in Tris-buffered saline

**Price:** \$275.00

**Host:** Rabbit

**Clonality:** Polyclonal Antibody

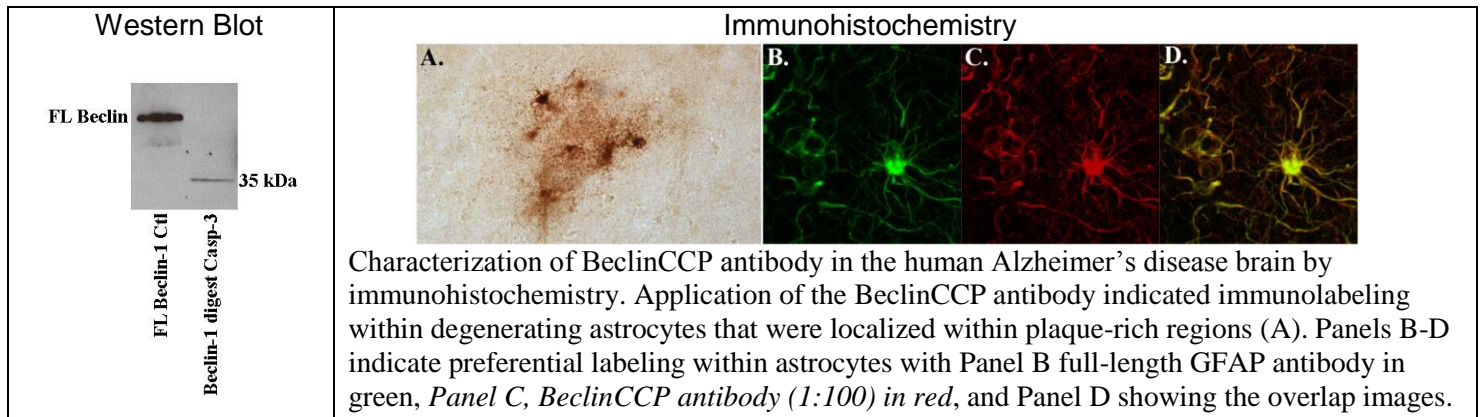
**Immunogen:** Synthetic peptide to TQLNVTENEC representing the caspase 3 neopeptide of human Beclin-1.

**Specificity:** By Western blot analysis, the CCP antibody detects the 35 kDa fragment of Beclin-1 following caspase-3 cleavage and is also capable of detecting full-length (FL) Beclin-1 (~60 kDa). Immunohistochemically, BeclinCCP is specific for the cleaved form of Beclin-1 in human brain sections and does not detect the full-length form of the protein under these conditions.

**Species tested:** Human, Mouse

**Storage and Stability:** Store at 4°C. Stable for 6 months.

**Recommended Use:** 1:500 for Western blotting (overnight at 4°C) and 1:100 for immunohistochemistry on tissue sections.



### References:

Rohn TT, 2011 Neurobiology of Disease 43:68-78.  
Rohn TT, 2010 Apoptosis 15:1403-1409  
Rohn TT, 2011 PLoS ONE 6: 31 May 2011 10.1371/journal.pone.0020495

### Companion Products

Q-VD-Oph Apoptosis Pan-Caspase Inhibitor (#A0004)	Q-VE-Oph Apoptosis Negative Control (#A0007)
Caspase 9 Apoptosis Extracts (#E0009)	XIAP Apoptosis Extracts (#S0002)
Caspase 8 Apoptosis Extracts (#E0008)	BID Apoptosis Extracts (#S0003)
Caspase 3 Apoptosis Extracts (#E0003)	PARP Apoptosis Extracts (#S0001)
CHAPS Cell Extract Buffer (#B0001)	

**For research purposes only. Not for use in humans or for diagnostic purposes.**